



Canada's Centre for Global Trade
WINNIPEG, MANITOBA

The Inland Port Special Planning Area:

Canada's Only Special Planning Area for Industrial Development

Companies building projects in CentrePort North, RM of Rosser lands within CentrePort Canada, have unique access to a dedicated resource, the Inland Port Special Planning Area. This special planning area expedites the planning and land-development approval process, enabling companies to move through the subdivision and rezoning applications concurrently.

Key features of the Inland Port Special Planning Area:

- A single dedicated planner with direct access to decision makers
- Simple, transparent and collaborative process
- Quick turnaround times: conditional approval is typically granted within 3 months and building permit approvals are granted within 2 weeks
- Cost and planning certainty: fixed costs are \$2000 for subdivision and rezoning applications

With a supportive community, responsive municipal leaders and an industrial development friendly approach to growth, your project will be poised to make it to market quickly and efficiently.



“ Building our new headquarters at CentrePort Canada offered us the ability to enhance our operations, find a suitable land base of 20 acres for operations and research, and have access to logistics and transportation options. From the day we filed our paperwork with the Inland Port Special Planning Area to the day we opened our doors took just 11 months. The seamless process enabled us to move quickly, reduced the downtime for our business operations and provided us with the clarity we needed to move forward with our growth and expansion plans.”

KURT SHMON, PRESIDENT, IMPERIAL SEED LTD.



“ The Inland Port Special Planning area was a key component of our speed to market at CentrePort. Our dedicated contact was incredibly responsive and the ease of communication in moving through the process helped our project move quickly as compared to other jurisdictions in which we have done business. We closed on the land in February and were able to bring BrookPort Business Park to market by August. ”

AMRITPAL JHAND, MANAGING DIRECTOR, WHITELAND SERVICES INC.

CentrePort Canada

CentrePort Canada is North America's largest inland port and Foreign Trade Zone, offering 20,000 acres of high-quality, affordable industrial land and unique access to tri-modal transportation, including: three Class 1 railways (CP, CN, and BNSF Railway), a 24/7/365 global air cargo airport and an international trucking hub.

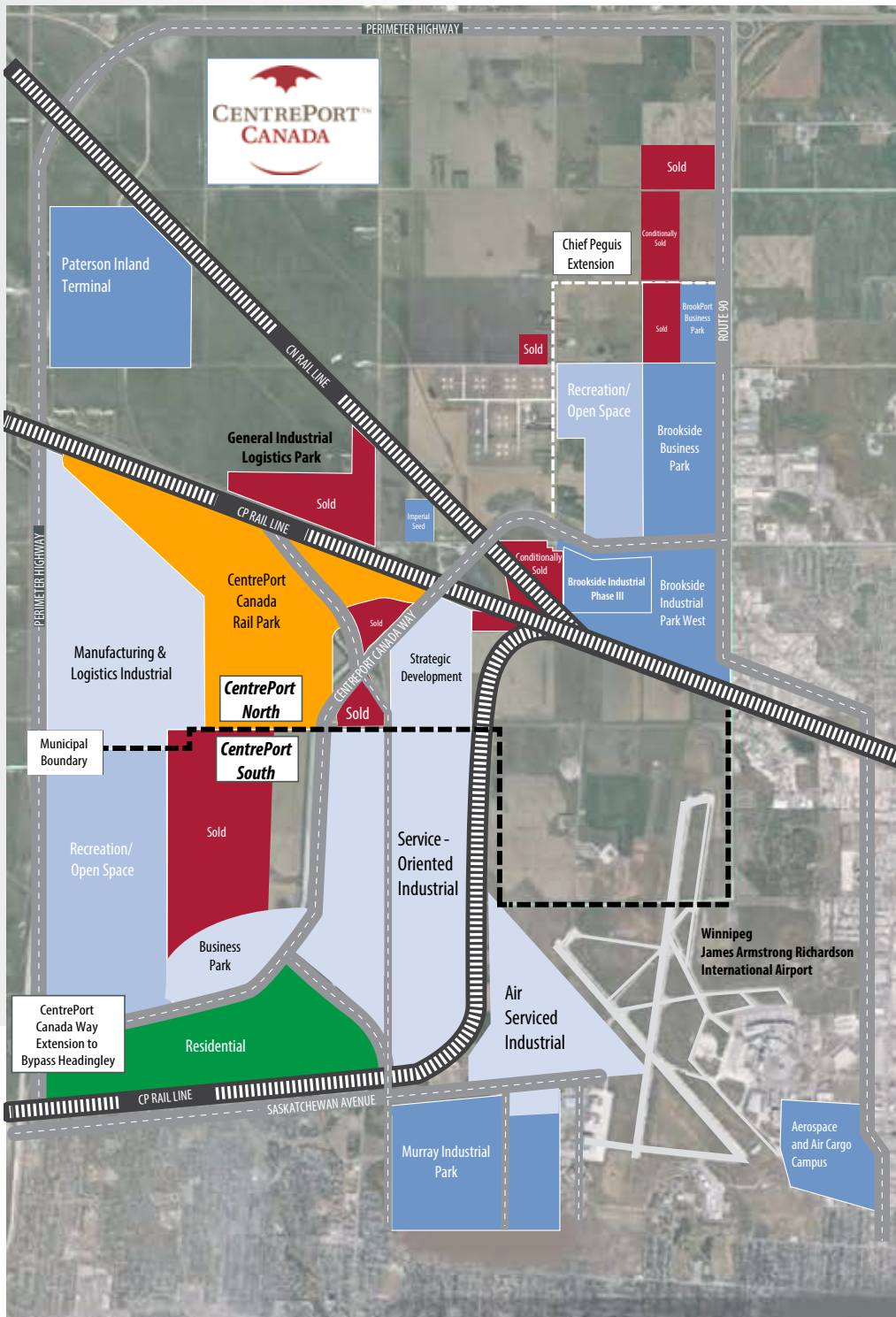
CentrePort offers prime industrial land for any size of development including manufacturing and assembly, warehousing and distribution, agribusiness, food processing and packaging, and transportation-related logistics.

LEARN MORE AT
WWW.CENTREPORTCANADA.CA



Canada's Centre for Global Trade
 WINNIPEG, MANITOBA

To start your project
 at CentrePort, please
 contact:



CentrePort Canada Inc.
 Business Development & Sales
 Ph: 204.784.1300
 E: busdev@centreport.ca

Province of Manitoba
 CentrePort Planner
 Ph. 204.945.2146
 E: inlandportspa@gov.mb.ca